

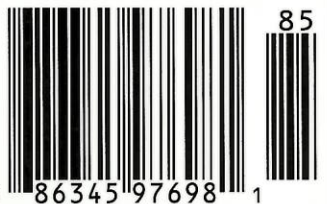
LA

# ARCHITECT

WATER

A PUBLICATION OF BALCONY MEDIA, INC.

U.S. \$5.95 / CANADA \$7.95



## Water

Maximizing water opportunities is a natural goal for Southern California designers. Here, houses are oriented to capitalize on ocean views, beach access, and, maybe one day, the L.A. River too. The coveted indoor/outdoor lifestyle extends to manmade water elements: Architects have devised structures that bring the pool indoors, or at least the illusion of such through use of transparent materials. Civic projects acknowledge the power of water with lakes and the ubiquitous fountain feature. And in recent years, as clients and designers grow more environmentally conscious, water conservation and reclamation have emerged as important considerations.

Water remains a fluid and complicated design question for many planners and designers. But in the end, rigorous project requirements aside, the answer can be simple. Environments that both respect and celebrate water make people feel good. It's why they flock to the beach, stroll along a river, recharge at the spa, or relax poolside. What else would we expect from a liquid that is, literally, essential to life?



## Lehrer Residence

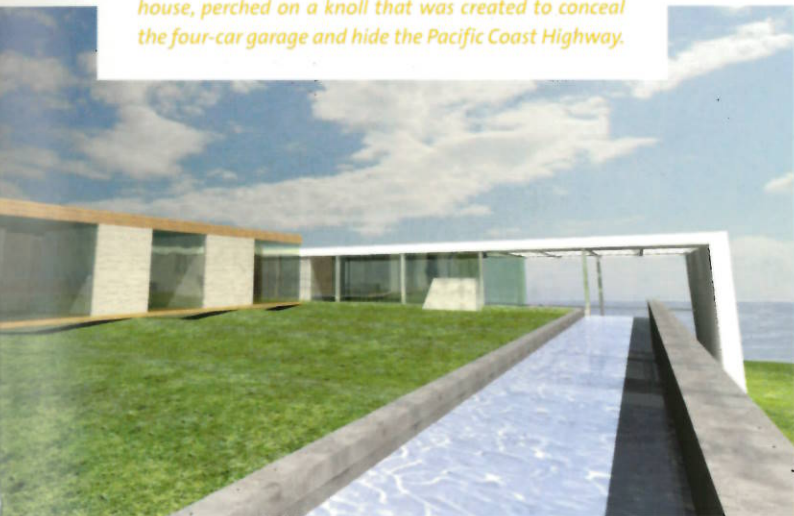
LOCATION: Malibu, California

DESIGNER: Abramson Teiger Architects

WEBSITE: [www.abramsonsteiger.com](http://www.abramsonsteiger.com)

*The Lehrer Residence, currently awaiting approval from the planning department, sits on Malibu's Encinal Canyon Bluff. With its outdoor living spaces, glass walls and 80-foot-long sliver of water, the project epitomizes many of the Southern California themes important to this region's architecture.*

*The house is a compound of several structures, which, together, create a tranquil courtyard with views to the ocean. The main structure is conceived as a roof that covers both outdoor and indoor living spaces. This roof frames the view from the entrance to the compound, emphasizing the ocean's horizon. The covered patio enjoys views of the ocean and the swimming pool, as seen through a glass barrier. Parts of the ground floor of the main house are buried behind concrete retaining walls and covered with lawn, allowing the gently sloping site to be leveled to form an upper courtyard. The rolling lawn in the courtyard alludes to the ocean waves. In the distance, at the rear of the lot, is the guest house, perched on a knoll that was created to conceal the four-car garage and hide the Pacific Coast Highway.*



Michael Wechsler Photography



## Barsky/Haase Residence

LOCATION: Los Angeles, California

DESIGNER: Assembledge+

WEBSITE: [www.assembledge.com](http://www.assembledge.com)

*This 385-square-foot modernist addition, completed in June 2005, elegantly attaches itself to the rear of an existing Spanish-style house in the Melrose area of Los Angeles. The clients' program focused on taking advantage of the year-round opportunities afforded by the Southern California climate. In addition to a master bedroom suite that made connection with the rear yard, the clients wanted a pool. More specifically, they wanted to be able to simply "roll out of bed into the pool."*

*One serious problem posed by the property was that it was plagued by an extra-large detached garage, resulting in a very small, disconnected backyard. To make room for the pool, Assembledge reduced the width of the garage and flattened the pitch of the roof. They then reconsidered the rear of the house, turning one bedroom into a den and adding a hallway, closet, master bath and—one step down—a master bedroom. This room flirts with the yard through the use of a polished concrete floor that continues into the outdoor decking and a transparent sliding glass wall. On a very limited budget, the architects tried to make unique statements out of simple materials.*