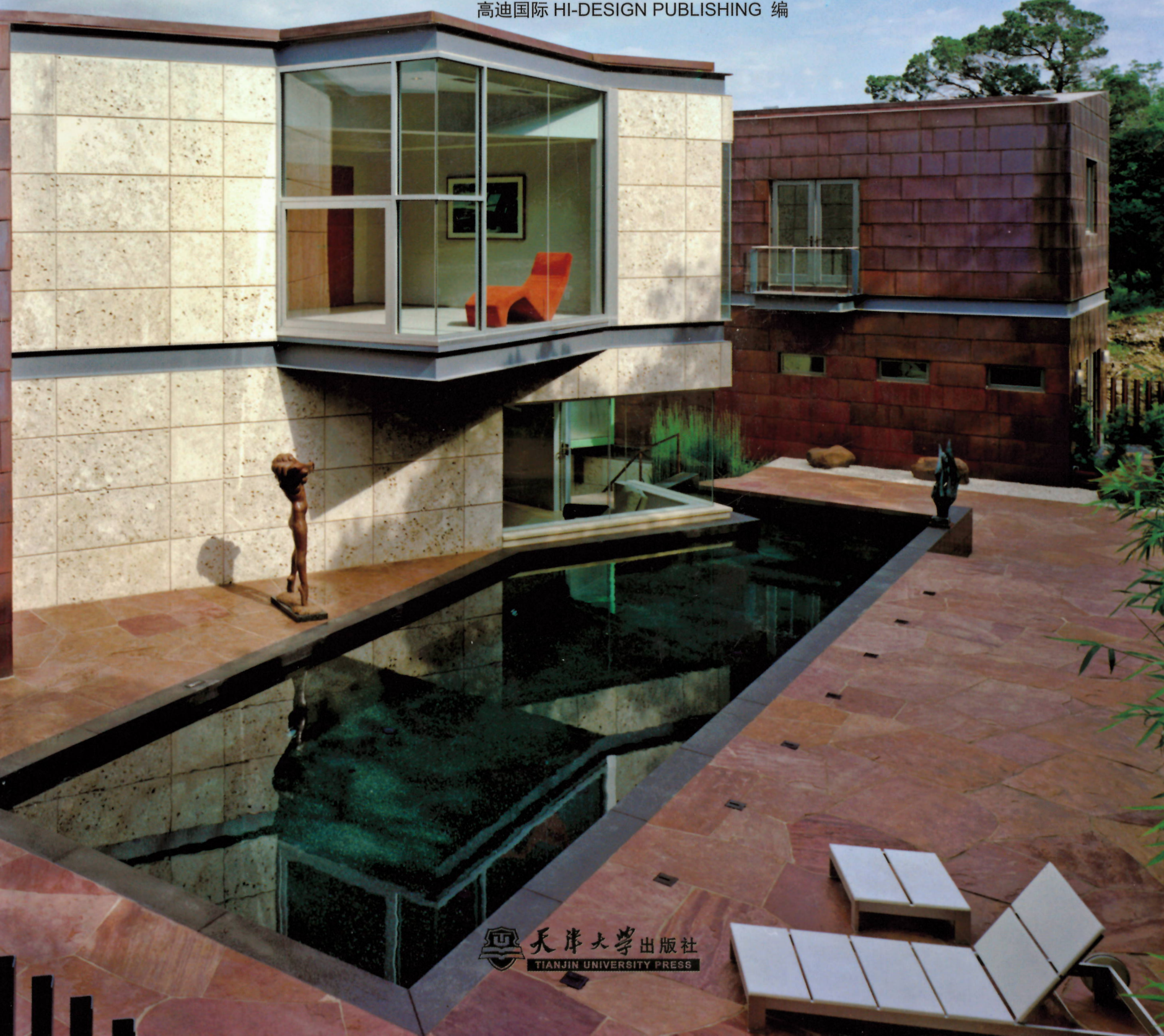


MODERN VILLA

GLOBAL LUXURY VILLA LEADING DESIGN

别墅外观 — 全球豪宅设计典范

高迪国际 HI-DESIGN PUBLISHING 编



天津大学出版社
TIANJIN UNIVERSITY PRESS



LOCATION Bel Air, USA

斯通里奇別墅

STONERIDGE RESIDENCE

ARCHITECT

David Thompson, Michael MacDonald, Jeremy Stoddart, Jennifer Rios, Kevin Southerland, Brooks Dunn

FIRM

Assembledge+

AREA

1,095 m²

PHOTOGRAPHER

Michael Weschler

The Stoneridge Residence is a renovation of an estate home located along the scenic Mulholland Drive in the hills of Bel Air. The project was given the distinct honor of being the Product Showcase House for the Avenues of Art & Design (the design district of West Hollywood) in collaboration with *LUXE* Magazine.

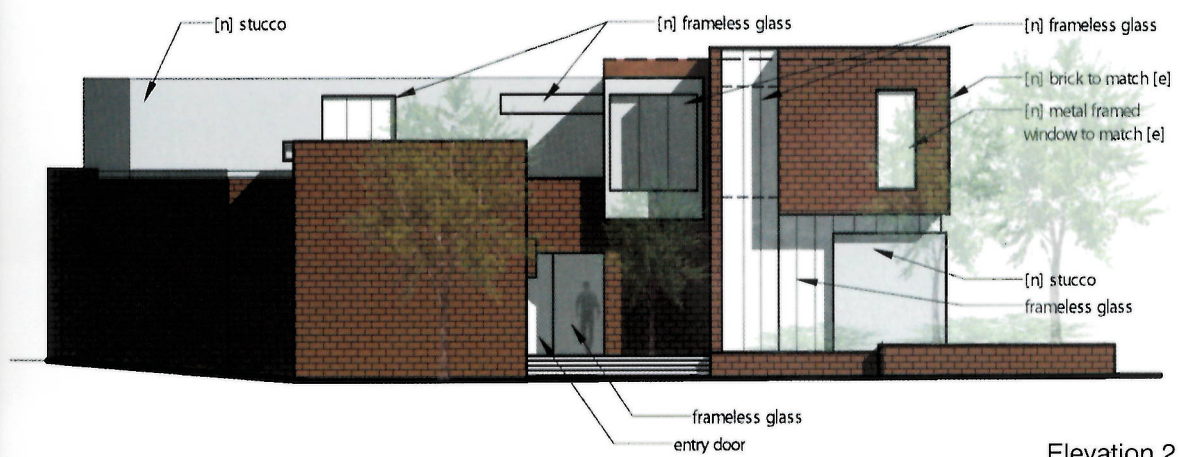
Sitting on a uniquely perched site overlooking the San Fernando Valley, the house renovation seeks to reconnect the house with its site through large restructured openings and a comprehensive landscaping effort. Along with its expansive lawn and native vegetation, the back yard focal piece is its Olympic sized infinity-edge pool and Barragan inspired water feature. The house itself, a large mass of brick-faced box forms, is unified by a second floor addition that looks out on to the back yard and San Fernando Valley view. The home's original, exterior brick finish is celebrated, rather than shunned, and

complimented with large expanses of glass and dark steel support elements. Inside the home, Assembledge+ & Billy Rose Design orchestrate a collection of spaces which are unified by a focus on elemental wood and stone materials, while serving as unique showpieces for many participating companies located within the Avenues of Art & Design. The ground floor includes a large working kitchen and family room, a beautifully appointed home theater, and is centered by an entry gallery that houses a custom-designed rough-sawn lumber staircase with a rippling, custom-molded wall that gives the illusion of a fabric curtain blowing in the wind. The second floor includes 3 children's/guest bedrooms and an open-flowing 2,100 sq. ft. master bedroom suite.

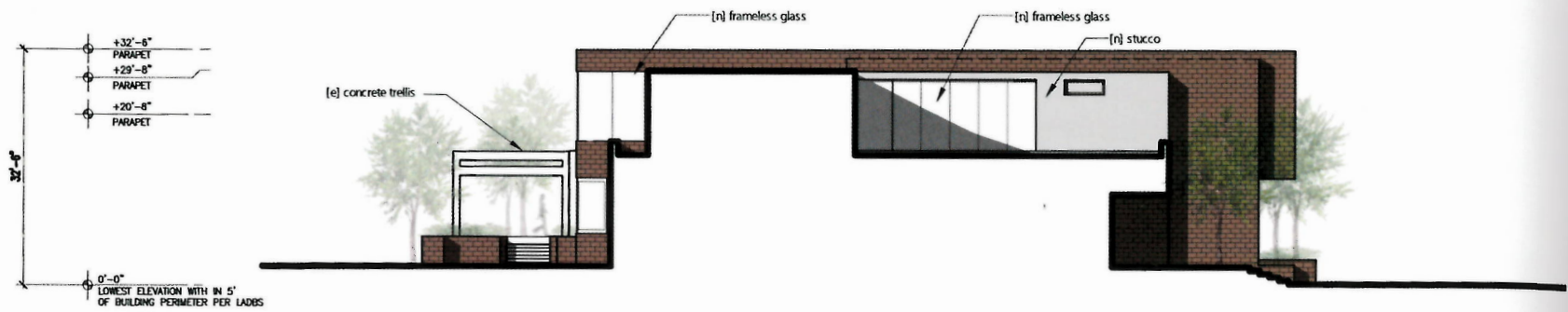




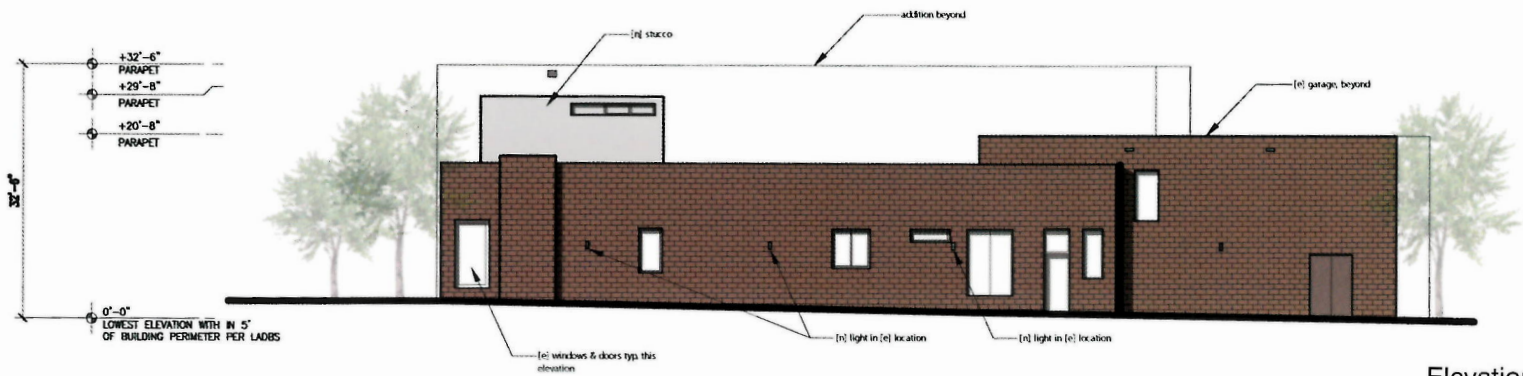
Elevation 1



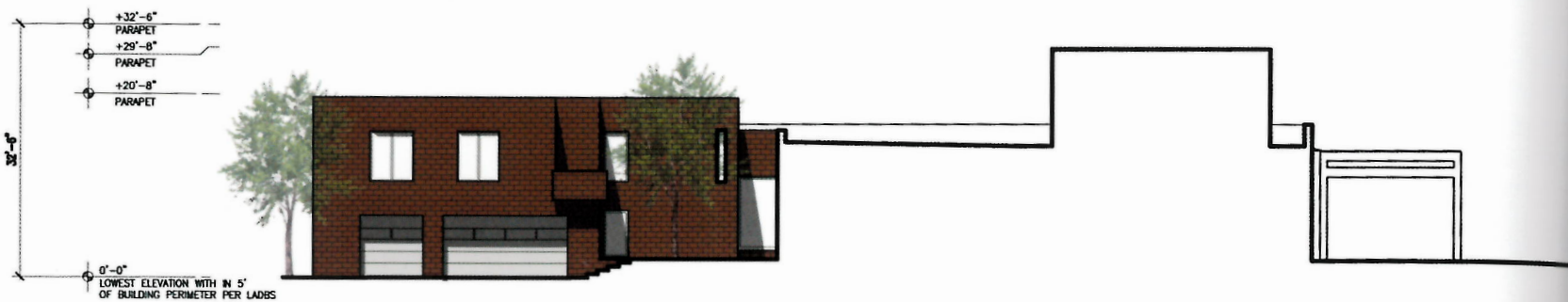
Elevation 2



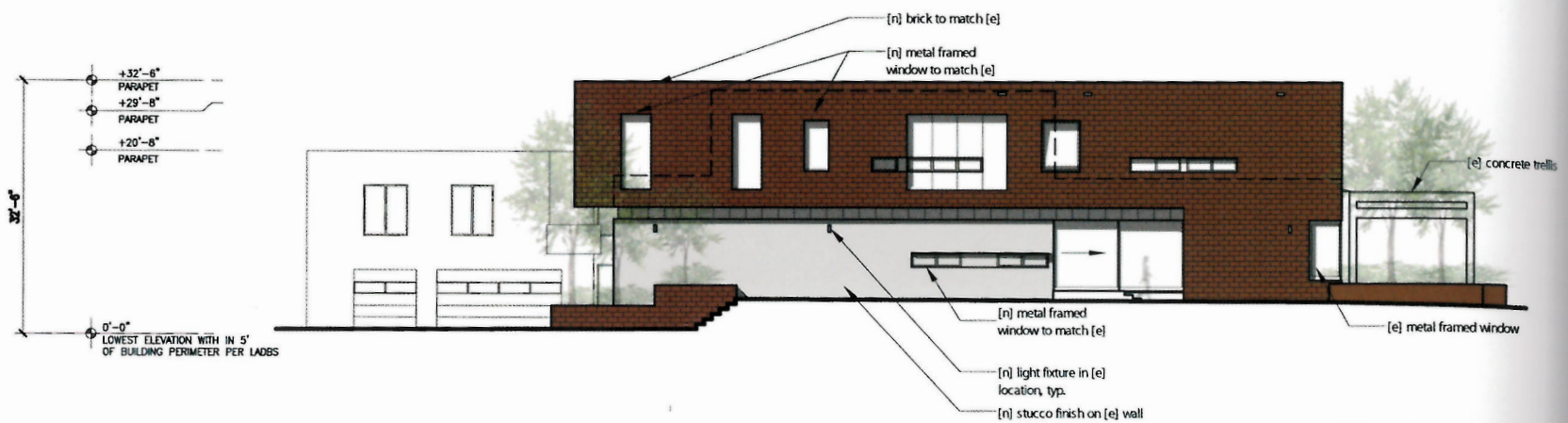
Elevation 3



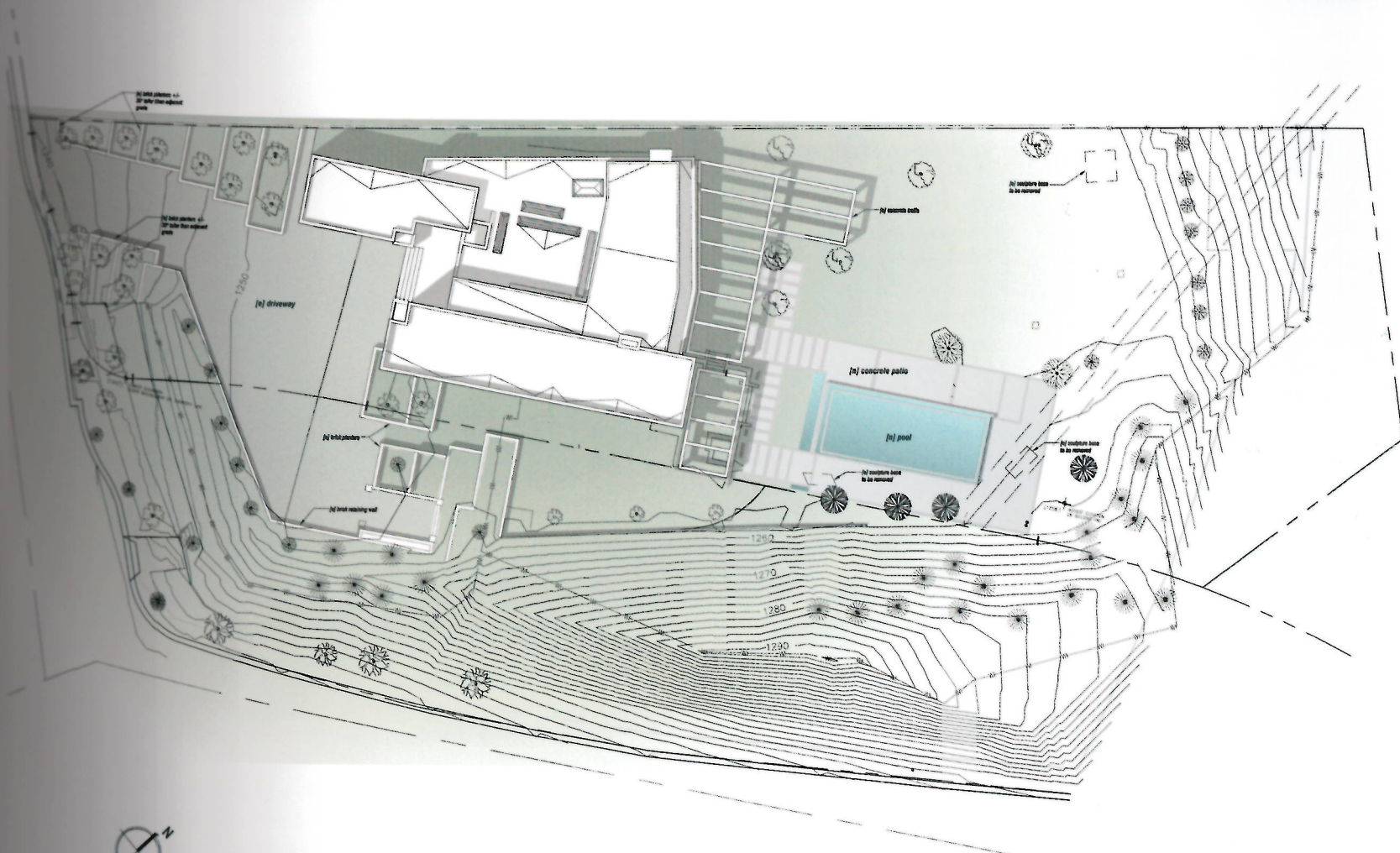
Elevation 4



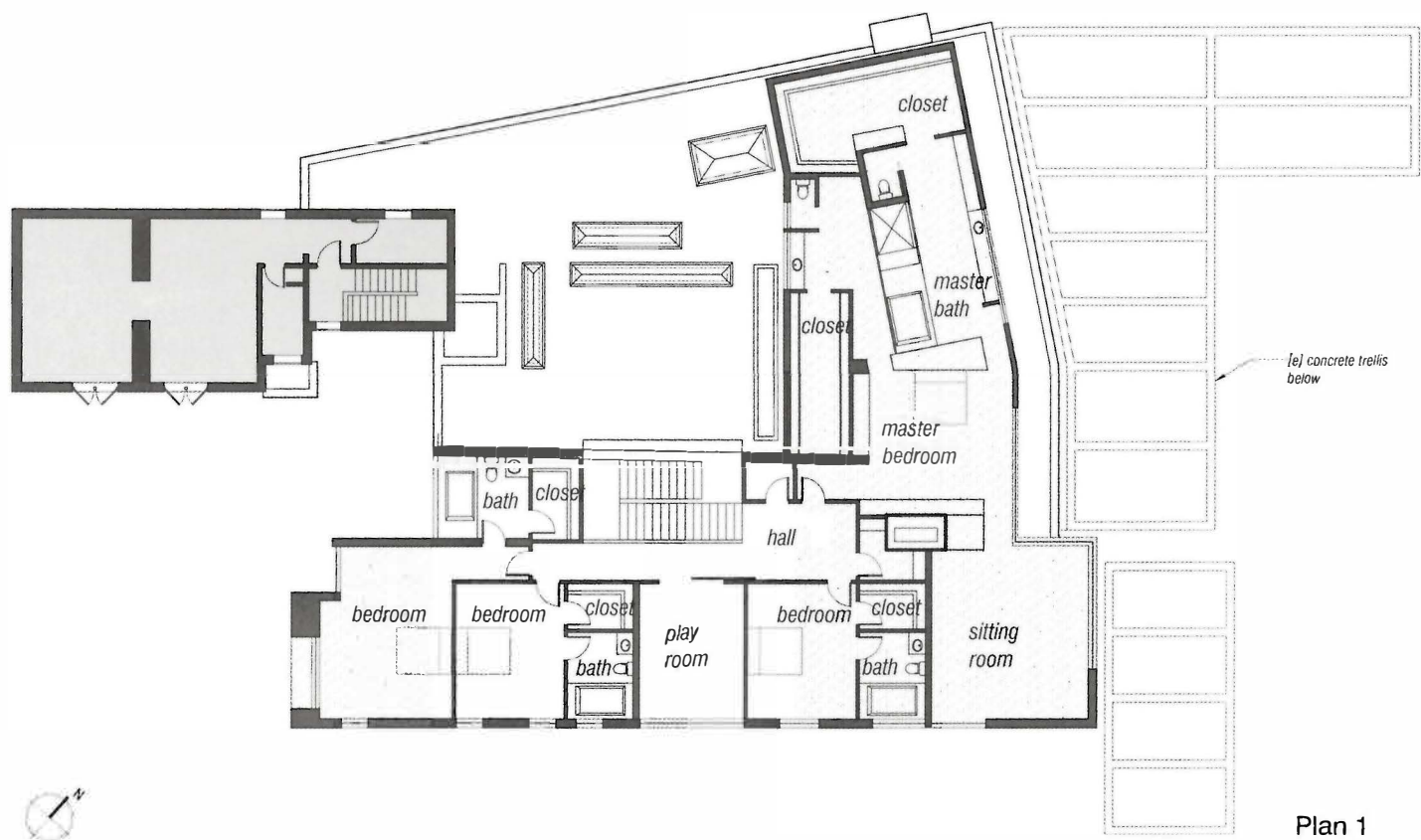
Elevation 5



Elevation 6



Site Plan



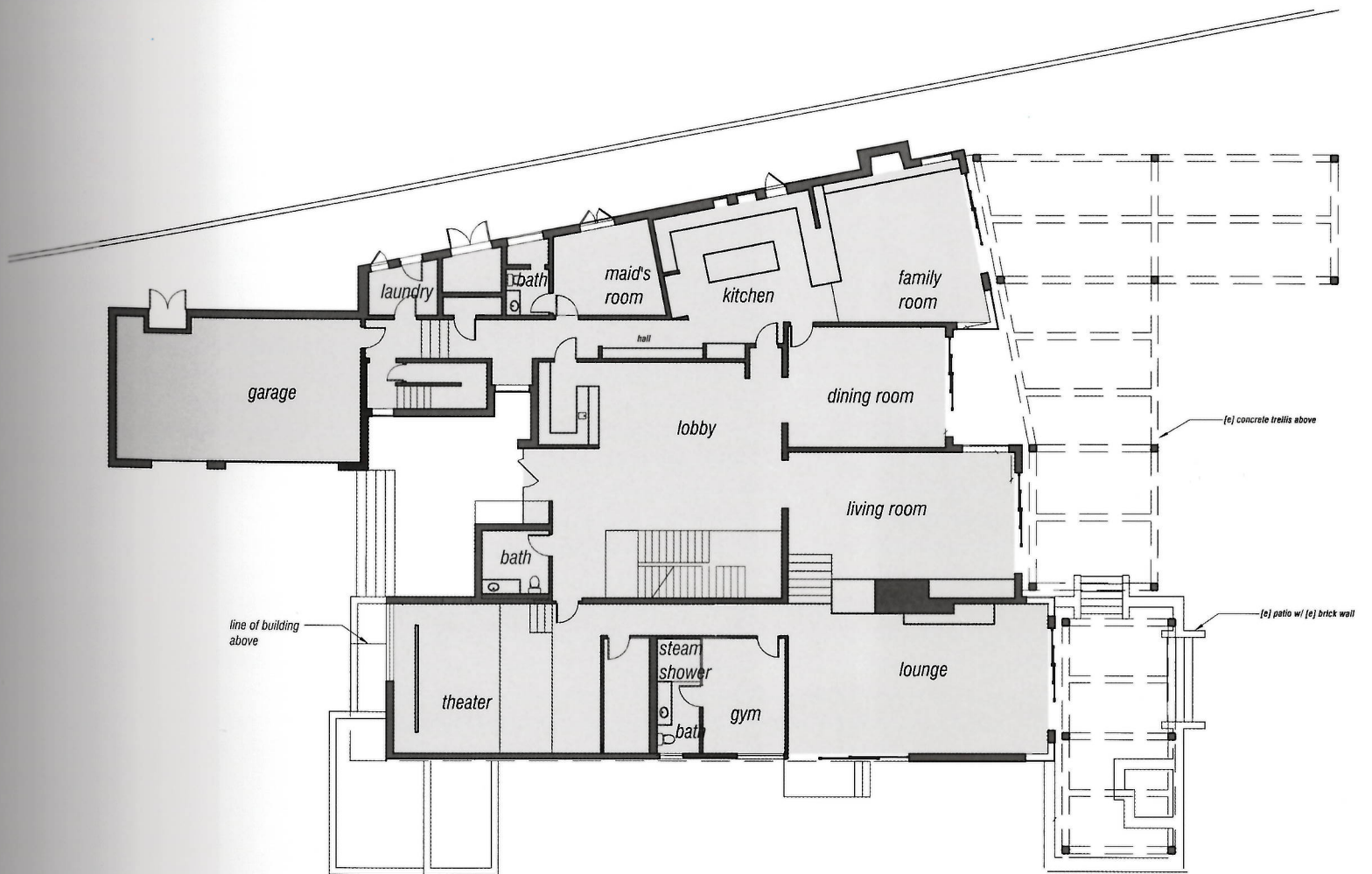
Plan 1

斯通里奇别墅是对贝艾尔市一处山上庄园的翻新，风景优美的穆赫兰大道途经本案。艺术与设计街区（西好莱坞的设计区）与“Luxe”杂志将本案作为展示产品，这是难得的荣誉。

本案位置独特，居高临下，可以俯瞰圣费尔南多山谷。其翻新目的是通过重建的宽阔开敞空间和全面的景观设计将房屋本身和周边环境融为一体。后院沿开阔的草坪和原生植被而建，其核心区是一个巨大的无边游泳池和贝若根风格的水景。房屋本身是一个盒状建筑，外立面采用了大量方砖。二楼外延部分将房屋各部分整合在一起，

在此处可俯瞰后院和圣费尔南多山谷。房屋独特的外墙面砖靓丽而不张扬，搭配大块玻璃窗和深色钢质支撑体，相得益彰。

Assembledge+ 和 Billy Rose 设计团队通过巧妙地搭配木材和石材，精心构造出室内空间布局，同时，也为艺术与设计街区的许多参与公司提供了独特的产品展示。一楼设有宽敞的厨房、家庭活动室和设计精美的家庭影院。入门长廊位于一楼的中心，此处按惯例设计了木质楼梯，楼梯旁的墙壁呈起伏状，宛若布艺窗帘随风拂动。二楼包括三间儿童卧室 / 客房以及一间约 195 平方米的主卧套间。



Plan 2