

NEW NATURAL HOME

A photograph of a modern interior space. The ceiling is made of horizontal wooden slats. Large windows on the left and right sides offer views of greenery. In the center, a spiral staircase with a white railing and wooden steps is supported by four wooden poles. In the foreground, there is a light-colored rug with a pattern of horizontal stripes. To the right, a white armchair with a wooden backrest and a small white table are visible. The overall atmosphere is bright and airy.

Thames & Hudson

DOMINIC BRADBURY photographs by RICHARD POWERS



'What we can do, by opening up walls and so on, is to move the living space out of the house and into the landscape so that the house becomes a part of the entire property.'



**RIDGEWOOD HOUSE,
LARCHMONT VILLAGE,
LOS ANGELES,
CA, USA**
ASSEMBLEDGE+

The design of David and Jamie Thompson's Ridgewood House in Los Angeles presents a choice of outdoor rooms along with a fluid relationship between interior and exterior space. The house features a large front porch opening out to the lawned garden and the street. On the upper level of the house is a partly shaded roof terrace that offers a greater sense of privacy and some enclosure. To one side of the house, another substantial terrace sits on the roof of the partially sunken garage, while to the rear the family room is enhanced by a sliding glass wall opening up to the back garden.

Within this suburban context on a corner site, then, the house – shared with the Thompsons' two young children – forms a strong bond with its surroundings and a flexible connection between interiors and exteriors.

'One of the things that we try to do with all our residential projects is to look at the project in terms of the total square footage of the site, rather than just the square footage of the house,' says David Thompson, a principal at assembledge+. 'What we can do, by opening up walls and so on, is to move the living space out of the house and into the landscape so that the

house becomes a part of the entire property rather than just a compartmentalized section of it. So we really use all of the site all of the time. The house is 2,400 square feet [223 square metres], but it feels as though it's much bigger than that because of all the useable space.'

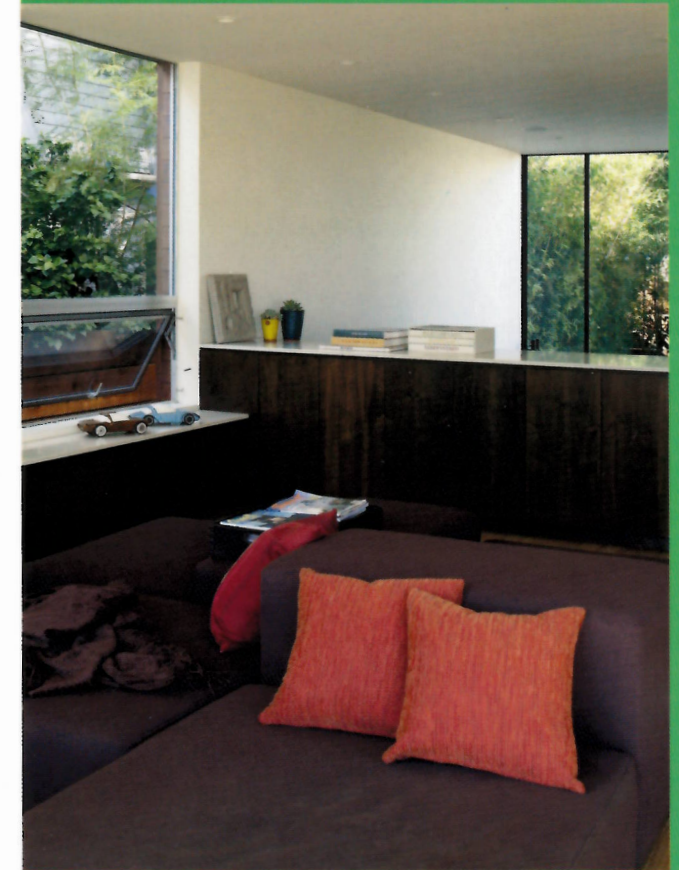
Large banks of floor-to-ceiling glass in the living room to the front of the house, as well as the family room to the rear, reinforce the feeling of connection to the garden and offer some sense of transparency, contrasting with more closed elements of the building, which offer greater privacy. On the upper level, the master bedroom features sliding glass doors that open out onto the roof terrace, where the overhang of the flat roof offers some protection from the midday sun.

'The terrace by the bedroom is really wonderful,' Thompson says. 'With the building itself coming right up and forming this solid railing, it does feel very secluded. Once the sun gets higher in the sky it does get shaded by this big overhang and keeps cool. The doors open up from the bedroom and we generally sleep with them open every night.'

A semi-open-plan layout for the main living spaces on the ground floor helps

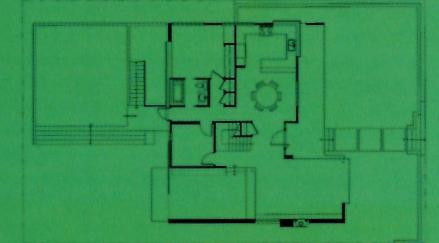
natural light circulate, while the house benefits from natural cross-ventilation and also an operable skylight that helps vent hot air. The house is clad in red cedar from sustainable sources.

With its crafted approach and its emphasis on constant connections between indoor and outdoor living, this new California home sits very much in the tradition of the great pioneering West Coast Modernists such as Rudolph Schindler and Richard Neutra.

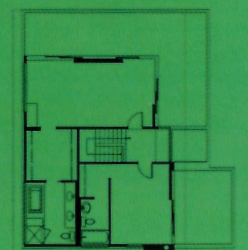


Pages 50–53 The house offers a great deal of choice between indoor and outdoor areas for relaxing and dining. The ground-level porch facing the street is complemented by the terrace on the upper level, which provides a stronger sense of intimacy and privacy while offering views out across the neighbourhood and the hills beyond. This emphasis on flexible living within a building that can adapt easily according to different programmes and needs is a hallmark of the new natural home.

Ground floor



Upper floor



Ecological considerations are now an integral part of our everyday lives. But living green demands little more than respecting natural resources, learning from local traditions, and listening to our own practical instincts. For anyone thinking of designing, building, remodelling or furnishing a modern home, this all-in-one publication provides practical inspiration for dwelling stylishly, sensibly and sustainably.



Thames & Hudson

www.thamesandhudson.com £19.95

ISBN 978-0-500-51561-7



9 780500 515617